

What's Your Style?

Do you love crisp, classic lines? Flowy, flirty frocks? Take our fashion quiz to find your match.

By Susan Kehoe, Ph.D, and Lynne Konstantin

FASHION STYLE QUIZ

1 What is your go-to look?

- A blazer, crisp white blouse, tailored slacks
- B little black dress with asymmetrical hem
- C longer skirt, layers, romantic blouse
- D denim, oversized shirts and workout ensembles

2 Which of the following stores do you never pass up?

- A Ralph Lauren, Burberry, J. Crew
- B SHE, BCBG Max Azria, Emporio Armani,
- C Anthropologie, Free People
- D Rear Ends, Guys n Gals, Lululemon

3 What colors are most prominent in your closet?

- A basics such as browns, charcoals, khakis and whites
- B mostly black and neutrals with statement colors
- C earth tones and saturated colors
- D whimsical colors and prints

4 Which celebrities do you identify with the most?

- A Amal Clooney, Jennifer Aniston, Grace Kelly
- B Rosie Huntington-Whiteley, Angelia Jolie-Pitt
- C Kate Hudson, Taylor Swift, Diane Keaton/*Annie Hall*
- D Jessica Alba, Katie Holmes, Jennifer Lawrence

5 What kind of jewelry fills your drawer?

- A Tiffany designs, pearl necklaces and simple chains
- B pieces from Ippolita or David Yurman collections
- C loads of beads and stacked bangles
- D Jennifer Meyer or Anndra Neen geometric chunk bracelets

6 Which of these designers are you most drawn to?

- A Ralph Lauren, J. Crew and Stella McCartney
- B Prada, Oscar de la Renta and Carolina Herrera
- C Chloe, Gucci and Valentino
- D Rag & Bone, Autumn Cashmere and Paige Denim

7 If you could have only one watch, what would you choose?

- A Cartier Tank
- B Patek Philippe
- C Vintage classic
- D Apple Watch

Most of us wear a combination of several styles but usually have one dominant style and a backup style. In reality, we draw from all the style categories, but friends would describe us in one or two main styles. See what your answers suggest about your fashion style on page 90.

Continued on page 88

CITY CHIC

Celebrity Style:
Rosie Huntington-Whiteley

The Victoria's Secret model loves jeans topped with oversized sweaters, flowing tops and cool leather jackets. "[Huntington-Whiteley] personifies our customer — we are denim-to-cocktail and so is she," says Sharon Eisenshtadt, owner of SHE Bloomfield and Grosse Pointe. "She has phenomenal street style and always finishes her look with standout accessories."



Allsaints BALFERN LEATHER BIKER JACKET (\$540) in Dark Army Green. Allsaints.com.



Gucci DIONYSUS GG SUPREME EMBROIDERED BAG (\$3,800). Gucci, Somerset Collection South, Troy. (248) 643-7630; gucci.com.



Marc Cain ROSE GOLD FOIL LEATHER JACKET (\$516). Hersh's, West Bloomfield. (248) 626-7776.



Alexander McQueen SKULL CUTOUT BOOTIE (\$1,275). Area Nordstrom stores (nordstrom.com).



Thakoon CABLE-FRONT COMBO DRESS (\$1,050). Saks Fifth Avenue, Somerset Collection South, Troy. (248) 643-9000; saksfifthavenue.com.



Veronica Beard PAPYRUS PINTUCK CHIFFON PEPLUM TOP (\$425). SHE Bloomfield (248-594-8181) and Grosse Pointe (313-571-3365).

» **FEATURE**

Continued from page 86

EDGY MOM

Celebrity Style:
Jessica Alba

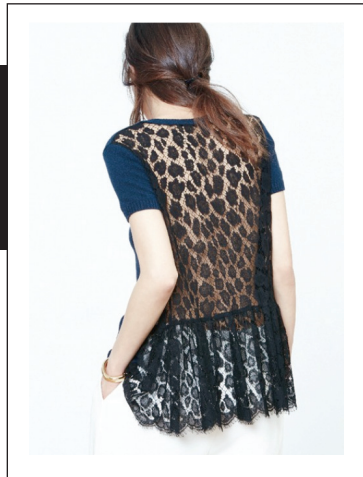
From playground to PTA to board meeting, Alba is easy and breezy, but always put together. Alba, the co-founder and president of the Honest Company, has said: “My style is timeless with an edge. I like to wear classic silhouettes with a modern twist.”



J. Crew FAUX-LEATHER PLEATED MIDI SKIRT (\$148). Area J. Crew stores (jcrew.com).



Anndra Neen THUNDERDOME CUFF (\$460). Shopbazaar.com.



Autumn Cashmere LACE-BACK CASHMERE TOP (\$270). Hersh's, West Bloomfield. (248) 626-7776.



Autumn Cashmere PERFORATED KNIT TOP (\$192). Hersh's, West Bloomfield. (248) 626-7776.



Zadig & Voltaire VIRGINIA GRUNGE JACKET (\$398). Rear Ends, West Bloomfield and Bloomfield.



Theory OFF-THE-SHOULDER DRESS (\$315). Guys n Gals, West Bloomfield. (248) 851-1260.

METRO BOHO

Celebrity Style:
Kate Hudson

Today's bohemian looks — personified by Hudson — still have the flowy, blousy vibe of its 1960s and '70s inspiration, but are updated with decidedly modern details.



SPLASH PHOTOS



Jeffrey Campbell CORS (\$165) in Taupe Suede. Sundance Shoes, West Bloomfield. (248) 737-9059.



Zara LEATHER SLING-BACK SANDALS (\$89.90). Zara.com.



Nicole Miller Artelier DENIM COLD-SHOULDERED TOP (\$255). SHE Bloomfield (248-594-8181) and Grosse Pointe (313-571-3365).



Antik Batik TOP (\$231), CARDI (\$321) and SHORTS (\$172). Guys n Gals, West Bloomfield. (248) 851-1260.



Stella McCartney PRINTED ASSYMETRICAL MESH SHIFT DRESS (\$1,130). Saks Fifth Avenue, Somerset Collection South, Troy. (248) 643-9000; saksfifthavenue.com.



Michelle Marocco 3-IN-1 BRACELET (\$650). SHE Bloomfield (248-594-8181) and Grosse Pointe (313-571-3365).

Continued on page 90

Continued from page 88

CLASSIC SIGNATURE

Celebrity Style:
Amal Clooney

The human-rights lawyer (and Mrs. George Clooney) was recently voted to *Vanity Fair*'s 2015 Best-Dressed List. Clooney's style is both cerebral and high-fashion. "Amal ... is a fashion adventurer who always manages to strike the right tone, no matter where in the world she is," Linda Fargo, Bergdorf Goodman fashion director, told *VF*. "She manages to effortlessly walk that tightrope between appropriateness and unpredictability, both confounding and beautiful."



SPLASH PHOTOS



Burberry TIE-DYE PRINT SILK BLEND DRESS (\$2,795). Burberry, Somerset Collection South, Troy. (248) 643-8555; burberry.com.



Theory POCKET DRESS (call store for price). Guys n Gals, West Bloomfield. (248) 851-1260.



Smythe BLAZER (\$595). SHE Bloomfield (248-594-8181) and Grosse Pointe (313-571-3365).



Ralph Lauren BUTTON-SHOULDER SILK SWEATER (\$1,190) and ADELE WIDE-LEG PANT (\$2,690). Ralph Lauren, Somerset Collection South, Troy. (248) 649-7201; ralphlauren.com.



Stella McCartney FALABELLA MINI BABY BELLA METALLIC FAUX SUEDE TOTE (\$1,080). Saks Fifth Avenue, Somerset Collection South, Troy. (248) 643-9000; saksfifthavenue.com.



Giambattista Valli SHEER DAISY-YOKE TEE (\$750). Saks Fifth Avenue, Somerset Collection South, Troy. (248) 643-9000; saksfifthavenue.com.

ANSWERS

- 3 or more As, your dominant style is **Classic Signature**.
- 3 or more Bs, your dominant style is **City Chic**.
- 3 or more Cs, your dominant style is **Metro Boho**.
- 3 or more Ds, your dominant style is **Edgy Mom**.

STYLES

- A **Classic Signature**: clean lines that are timeless with a smart flair.
- B **City Chic**: sleek modern shapes with an innate sense of style.
- C **Metro Boho**: long sweeping silhouettes with romantic flair and layers.
- D **Edgy Mom**: casual elegance that can go to the playground or lunch with the girls.